



# BATTERY BUTLER®

Battery Accessories



## 6/12 Volt Automatic Battery Storage Charger & Maintainer

Part # BBFC100

Lectric Limited, Inc. (708) 563-0400

[www.batterybutler.com](http://www.batterybutler.com)

Battery Butler is a registered trademark of Lectric Limited, Inc. wiring & electrical products.

## Automatic Battery Storage Charger - Part # BBFC100

The Battery Butler® BBFC100 battery storage charger is designed for the maintenance of all lead-acid batteries: **SLA** (sealed lead-acid), **MF** (maintenance-free), **AGM** (absorbed glass mat), and **GEL** that are stored or used periodically in such items as a car, truck, motorcycle, boat, motorhome, ATV, snowmobile, personal watercraft, lawn tractor, etc.

This charger will prevent the self-discharge of your battery, while extending the life of your battery. The microprocessor controlled program will monitor the entire 4-step (mode) charging progress: initialization, full output charge, absorption mode and maintenance mode. All of these steps are done automatically.

The Battery Butler® charger is designed for long term use. You can leave it connected to your battery indefinitely! It's simple to use. Hook it up, plug it in, and forget it. *Your battery will be fully charged and ready-to-go when you are!*

### DIRECTIONS:

1. Depending on your battery and intended use, select either the clamp adapter or the ring-terminal adapter. Then, connect the appropriate adapter to the charger.
2. Connect **RED** clamp or ring-terminal to the positive (+) terminal of battery.
3. Connect **BLACK** clamp or ring-terminal to negative (-) terminal of battery.
4. Plug charger into wall outlet or power strip.
5. Observe the charger's indicator light operation (see below).

### INDICATOR LIGHT OPERATION:

■ ■ ■ **Flashing Red** indicates that the charger is plugged into a wall outlet, but the charger is either not connected to your battery, or there is a reverse connection at your battery. Make sure that the terminals from the charger are connected to the correct terminals (+ or -) on your battery.

■ ■ ■ **Solid Red** indicates that the charge cycle has initialized and your battery is charging properly at the charger's full power output.

■ ■ ■ **Flashing Green** indicates that your battery is in absorption mode and more than 80% charged.

■ ■ ■ **Solid Green** indicates that your battery is now fully charged, and the charger is now in maintenance mode monitoring your battery. The charger will automatically turn itself on & off as required by your battery.

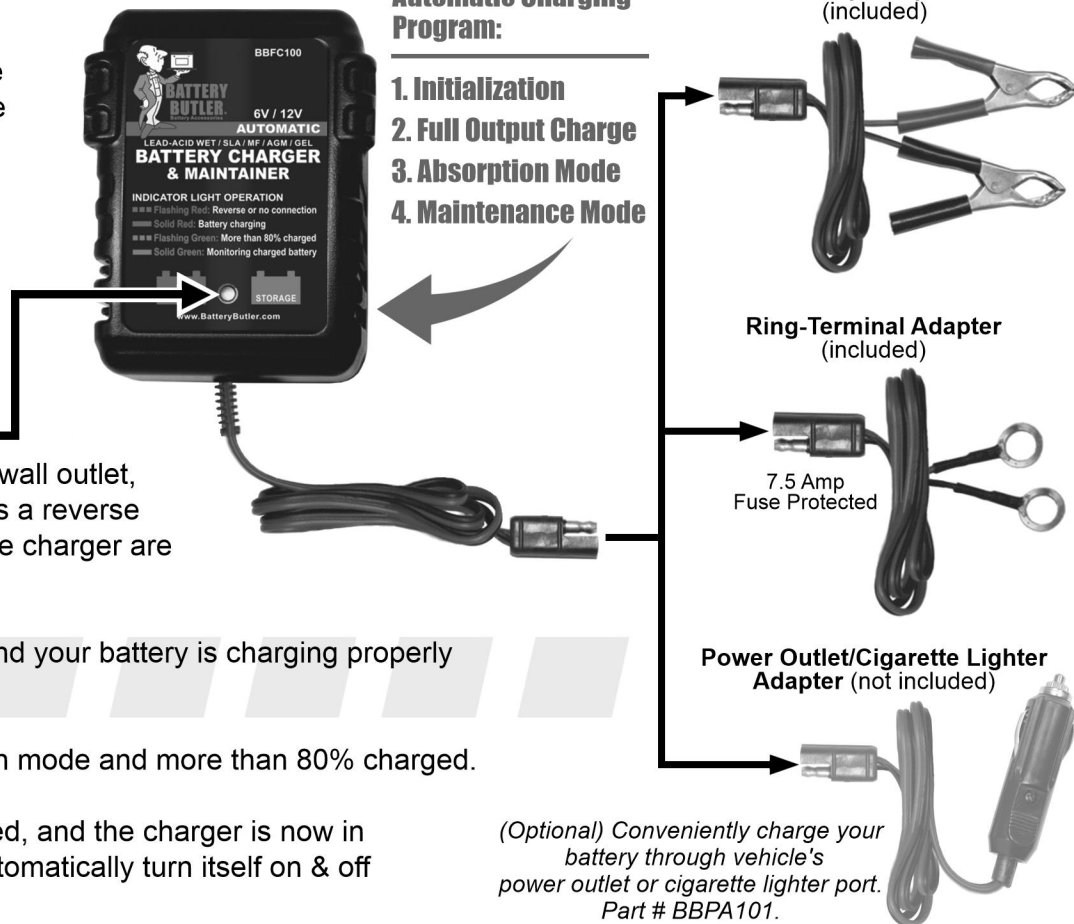
### Safety Warnings and Precautions:

Maintenance-free batteries are non-fillable and have vented slots. Make sure vents are clear and dirt free. This charger will work on a variety of batteries. Consult battery manufacturer for proper charging procedures. Do not make connections to battery near flame, sparks or when smoking. Make connections to battery before plugging charger into electrical outlet. Avoid touching clips together while charger is plugged in. Unplug charger from electrical outlet before disconnecting from battery. Surges or sparks in electrical power supply could cause battery explosion. Use of a surge protected outlet is advised. As with any wet-cell battery, if possible, periodically check battery's water level. If low, refill with distilled water according to battery manufacturer's instructions. Maintenance-free batteries are not refillable.



### Complete 4-Step Automatic Charging Program:

1. Initialization
2. Full Output Charge
3. Absorption Mode
4. Maintenance Mode



(Optional) Conveniently charge your battery through vehicle's power outlet or cigarette lighter port. Part # BBPA101.

## SMART FEATURES:

- Automatic Voltage Detection & Regulated Output Voltage
- Automatic Battery Level Monitoring
- Automatic On / Off Switching of Charge
- Automatic Battery Maintaining of Peak Charge
- Spark Free Technology

## PROTECTS AGAINST:

- Overcharging
- Short Circuits
- Reverse Polarity

## CONVENIENCES:

- Red & Green LED Status Indicator
- Color-Coded Quick Disconnect Adapters
- 11' Total Cord Length (with adapter)
- Compact Design

## NOTE:

You may use an extension cord if the charger does not reach your battery. You do not have to disconnect your vehicle's battery cable while using this charger.

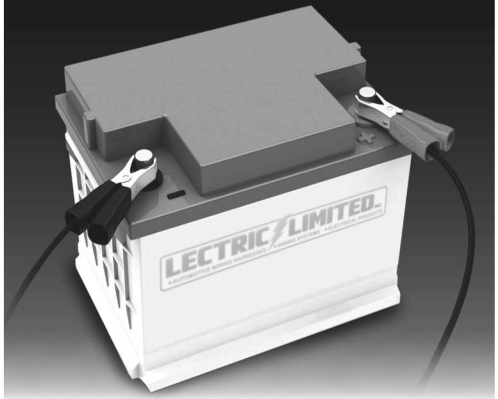
This storage charger is designed to maintain a fully charged battery. It is not designed to charge a dead battery. If your battery is severely undercharged, we recommend that you first re-charge your battery with a conventional battery charger, then use this charger to maintain your battery's charge.

Charger may get warm during operation. This is normal.

This charger is designed for one battery. Not for simultaneous use on multiple batteries.

## ADVANCED BATTERY CHARGER

*Keeps your battery fully charged when not in use.*



## SPECIFICATIONS:

- For use on 6 or 12 volt lead-acid batteries only.
- Input voltage: 110VAC, 60Hz
- Output voltage: 6/12VDC, 750mA, up to 30Ah

**WARRANTY:** Distributed by Lectric Limited, Inc. We warrant that for one (1) year from date of purchase, with proof of purchase, we will replace this product if found to be defective in materials or workmanship, when used as directed. If product becomes defective within the warranty period, do not return it to place of purchase before calling 708-563-0400 for an RMA (Return Merchandise Authorization) number and return address. **Returns will not be accepted without an RMA number.** Then, return the product, postage prepaid with proof of purchase to Lectric Limited, Inc. for a prompt, no charge replacement (same or equivalent model). This replacement is Lectric Limited, Inc's sole obligation under this warranty. Lectric Limited, Inc. will not be responsible for any incidental or consequential damages or for any loss arising in connection with the use, misuse, or inability to use this product. Some states do not allow the exclusion or limitation of incidental or consequential damages, so the above limitation or exclusion may not apply to you. This warranty excludes defects or damage due to misuse, abuse, or neglect. This warranty gives you specific legal rights, and you may also have other rights, which vary from state to state.  
Copyright © Lectric Limited, Inc. ver. 11-2020