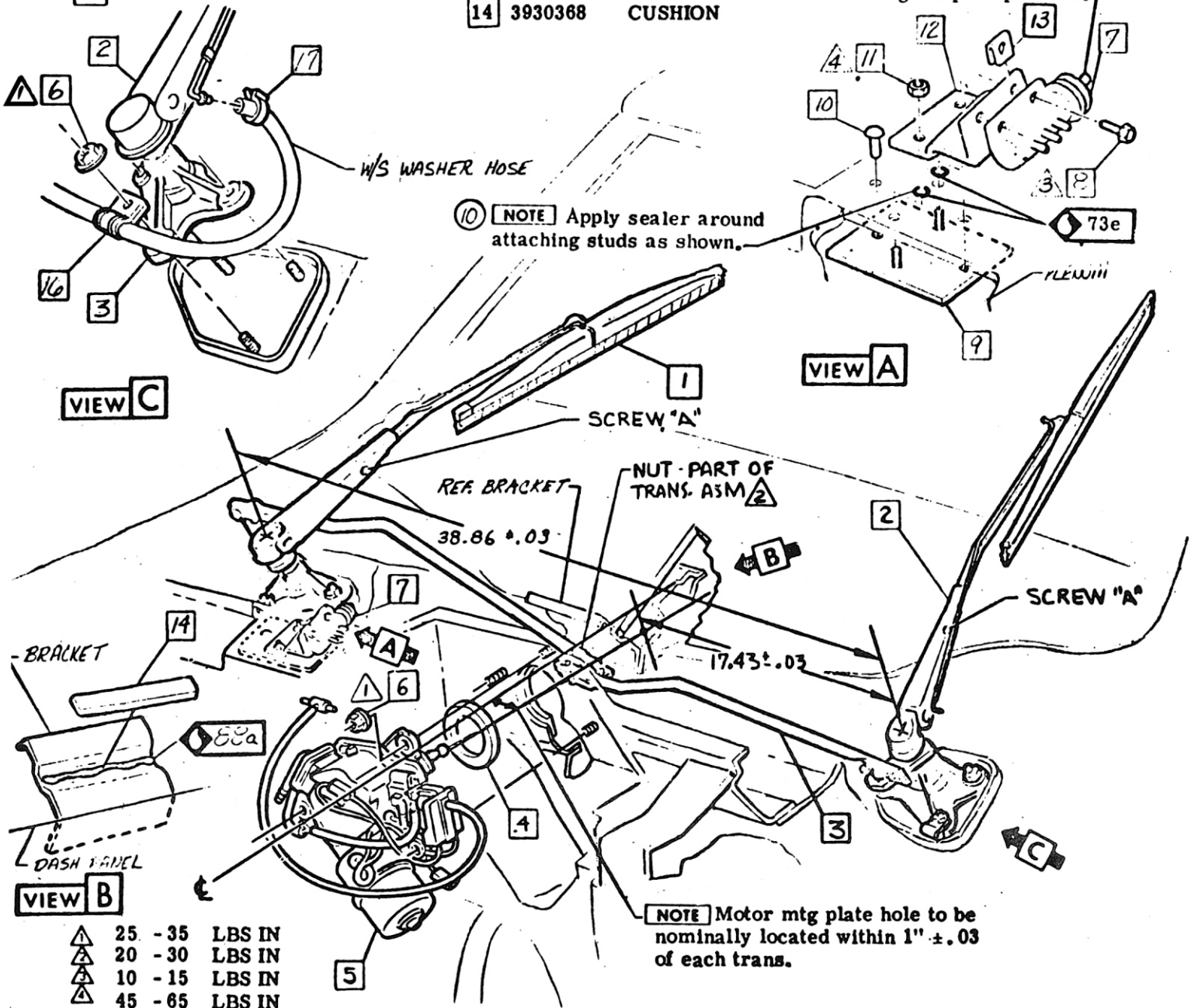


# 1968-69 CORVETTE

## WINDSHIELD WIPER MOTOR ASSEMBLY & TRANSMISSION LINKAGE

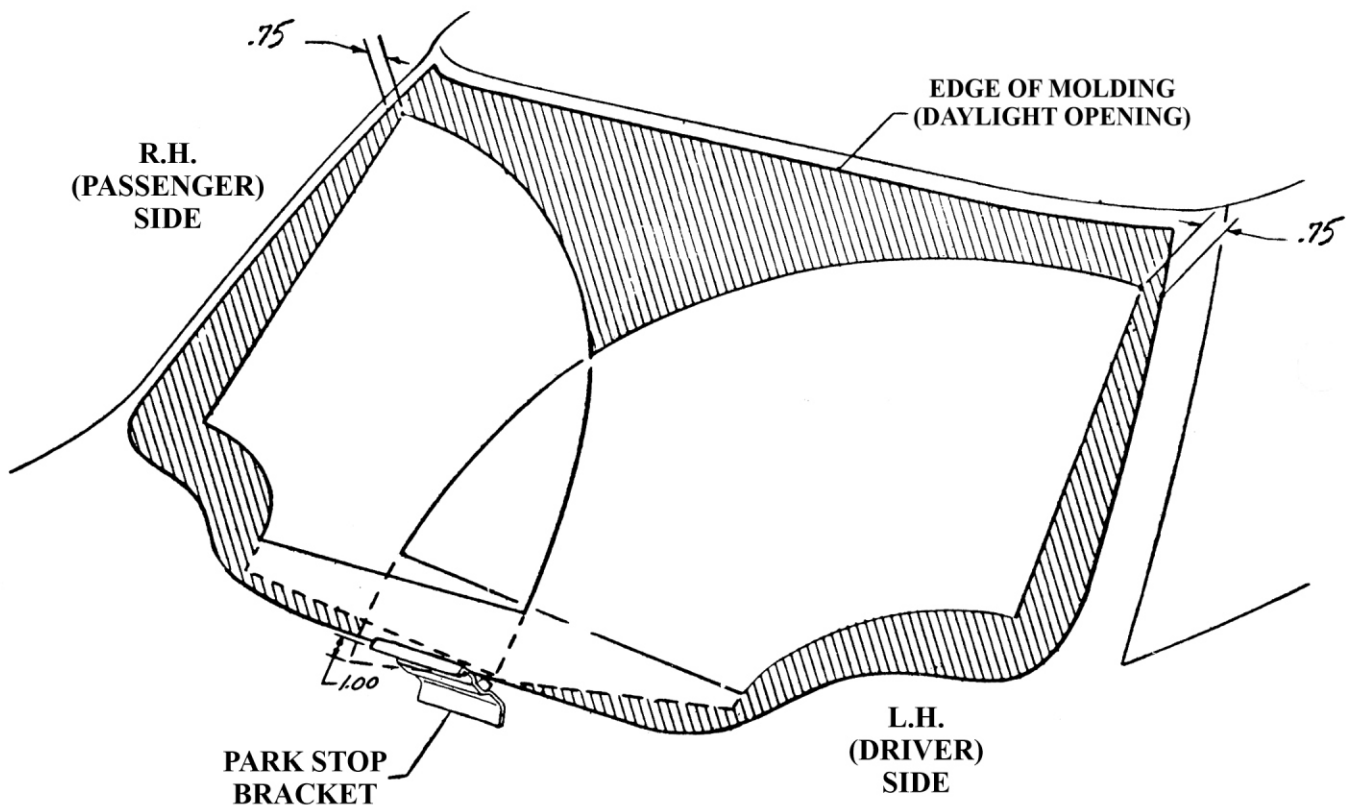
- |   |         |                   |    |    |         |                 |    |     |               |         |                          |
|---|---------|-------------------|----|----|---------|-----------------|----|-----|---------------|---------|--------------------------|
| 1 | 3938167 | BLADE ASM.        | 12 | 7  | 5638487 | VALVE ASM       | 15 | 88a | CEMENT-.1 OZ. |         |                          |
| 8 | 2       | ROD ASM. L. H.    | 8  | 8  | 9409107 | SCREW ASM       | 13 | 11  | 16            | 3976010 | CLIP                     |
|   |         | R. H.             |    | 9  | 3956232 | REINF ASM       |    |     | 17            | 3891759 | CLAMP                    |
|   | 3       | TRANS. ASM. L. H. |    | 10 | 3828548 | RIVET           |    | 9   | 18            | 73e     | SEALER-<br>Approx. 1 oz. |
|   |         | R. H.             |    | 11 | 271172  | NUT             |    |     |               |         |                          |
|   | 4       | GASKET            |    | 12 | 3956079 | 'BRACKET        |    | 7   |               |         |                          |
|   | 5       | MOTOR ASM.        |    | 13 | 3826920 | NUT-SPECIAL "U" |    |     |               |         |                          |
|   | 6       | NUT ASM           |    | 14 | 3930368 | CUSHION         |    |     |               |         |                          |



# 1968-69 CORVETTE

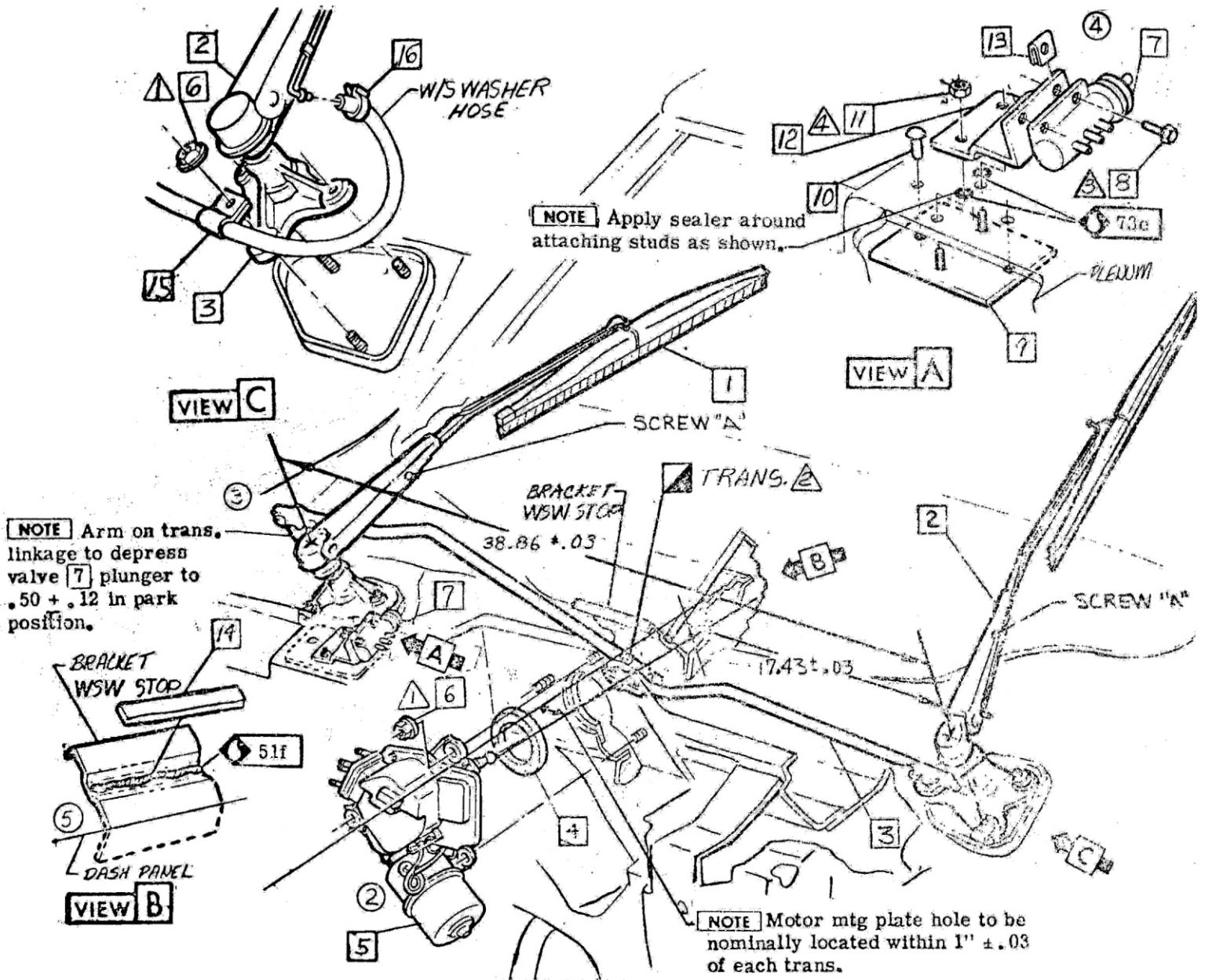
## WINDSHIELD WIPER SETTING PROCEDURE

1. INSTALL ROD [1] & BLADE ASM [2] TO TRANSMISSION [3].  
**[NOTE]** Key on trans locates rod & blade asm in positive location.
2. INSTALL LINKAGE [3] TO MOTOR CRANK WITH BALL IN CENTER OF SLOT. FINGER TIGHTEN NUTS - PART OF TRANS ASM.
3. POSITION TIP OF L.H. BLADE [1] 1.00 BELOW THE PARK STOP BRACKET.
4. POSITION TIP OF R.H. BLADE ABOVE AND TOUCHING L.H. BLADE.
5. TORQUE NUTS - STEP 2.
6. POSITION BLADES ON UPPER SURFACE OF PARK STOP BRACKET.
7. CYCLE SYSTEM ON WET WINDSHIELD AND ADJUST TIPS OF BLADES .75 FROM EDGE OF MOLDING (DAYLIGHT OPENING) AS SHOWN USING SCREWS "A".



# 1970-71 CORVETTE

## WINDSHIELD WIPER MOTOR ASSEMBLY & TRANSMISSION LINKAGE



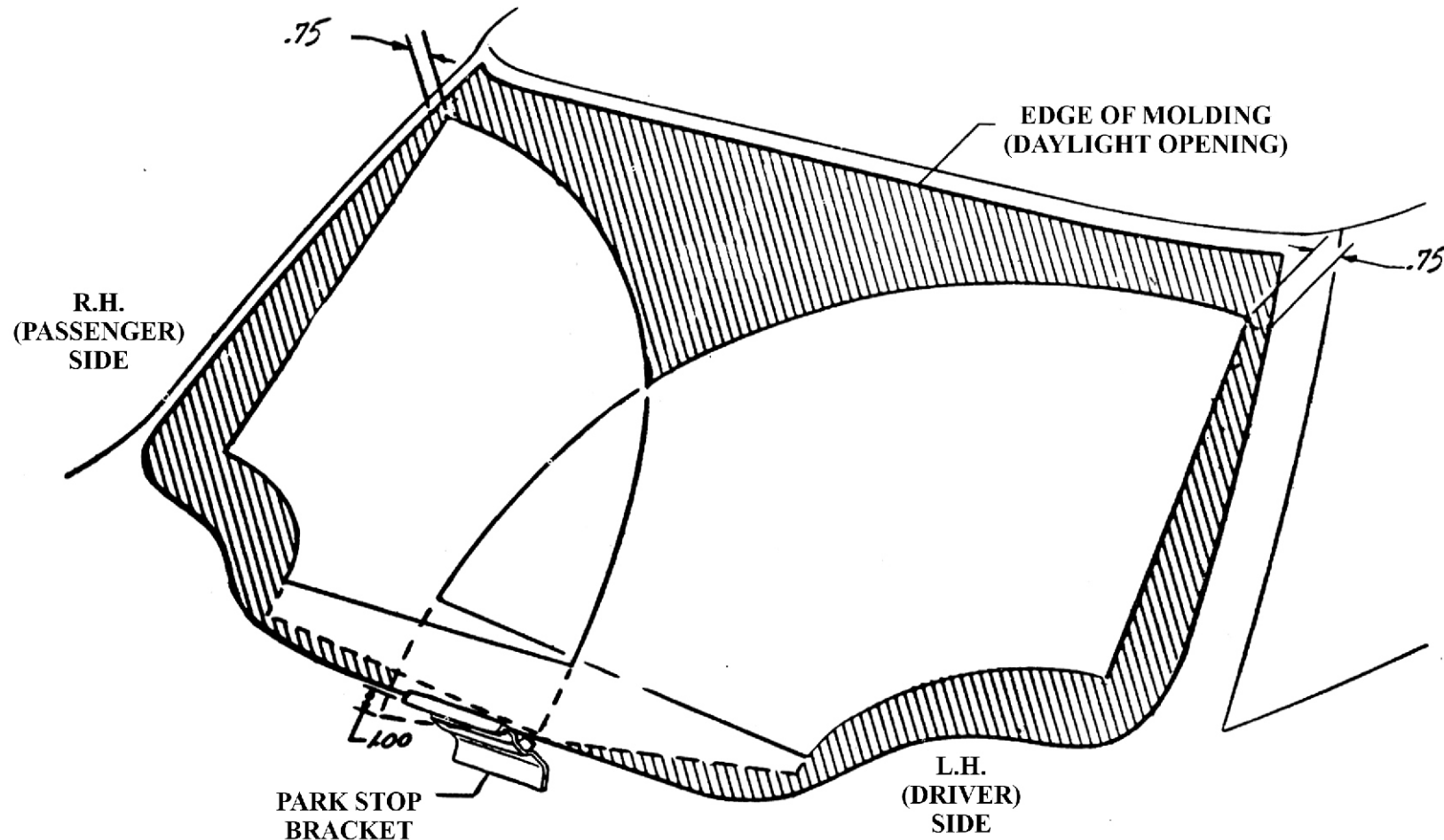
1	3938167	BLADE ASM.
2	3956245	ROD ASM. L. H.
2	3965154	R. H.
3	4918792	TRANS. ASM. L. H.
3	4919036	R. H.
4	3814877	GASKET
5	5044758	MOTOR ASM.
6	3857243	NUT ASM.
7	5638487	VALVE ASM.

8	9409107	SCREW ASM.
9	3956232	REINF. ASM.
10	3828548	RIVET
11	271172	NUT
12	3956079	BRACKET
13	3826920	NUT
14	3930368	CUSHION
15	3976010	CLIP (1)
16	3891759	CLAMP

# 1970-71 CORVETTE

## WINDSHIELD WIPER SETTING PROCEDURE

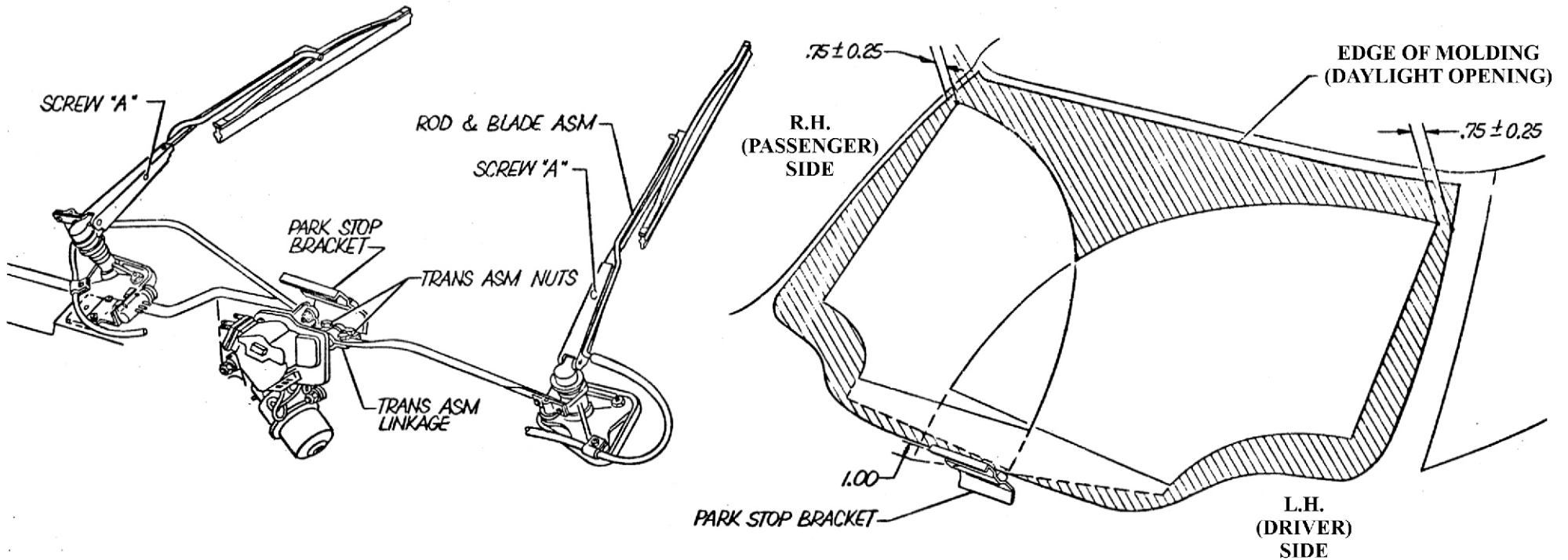
1. **INSTALL ROD [2] & BLADE ASM [1] TO TRANSMISSION [3].** **[NOTE]** Key on trans locates rod & blade asm in positive location.
2. **INSTALL LINKAGE [3] TO MOTOR CRANK WITH BALL IN CENTER OF SLOT.** FINGER TIGHTEN NUTS - PART OF TRANS ASM.
3. **POSITION TIP OF L. H. BLADE [1] 1.00 BELOW THE PARK STOP BRACKET.**
4. **POSITION TIP OF R. H. BLADE ABOVE AND TOUCHING L. H. BLADE.**
5. **TORQUE NUTS - STEP 2.**
6. **POSITION BLADES ON UPPER SURFACE OF PARK STOP BRACKET.**
7. **CYCLE SYSTEM ON WET WINDSHIELD AND ADJUST TIPS OF BLADES .75" FROM EDGE OF MOLDING (DAYLIGHT OPENING) AS SHOWN USING SCREWS "A".**



# 1972-73 CORVETTE

## WINDSHIELD WIPER SETTING PROCEDURE

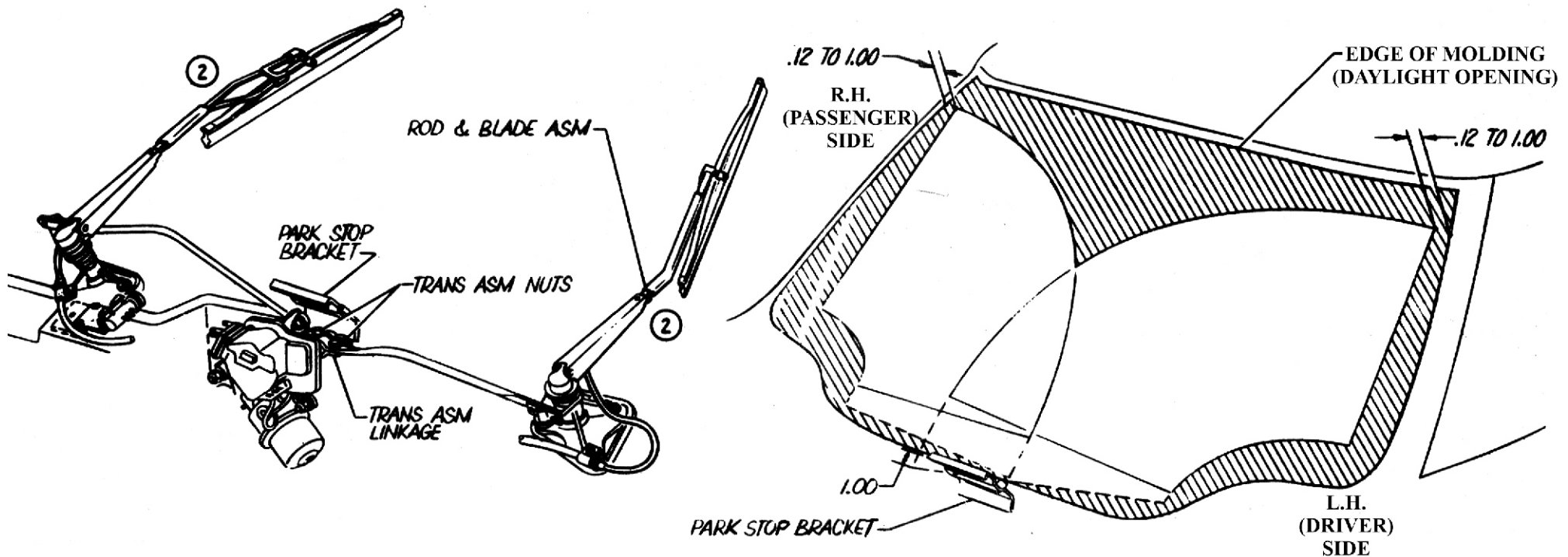
1. INSTALL ROD & BLADE ASM TO TRANSMISSION. **[NOTE]** Key on trans locates rod & blade asm in positive location.
2. INSTALL LINKAGE TO MOTOR CRANK WITH BALL IN CENTER OF SLOT. FINGER TIGHTEN NUTS-PART OF TRANS ASM.
3. POSITION TIP OF L.H. BLADE 1.00 BELOW THE PARK STOP BRACKET.
4. POSITION TIP OF R.H. BLADE ABOVE AND TOUCHING L.H. BLADE.
5. TORQUE NUTS - STEP 2.
6. POSITION BLADES ON UPPER SURFACE OF PARK STOP BRACKET.
7. CYCLE SYSTEM ON WET WINDSHIELD AND ADJUST TIPS OF BLADES .75" FROM EDGE OF MOLDING (DAYLIGHT OPENING) AS SHOWN USING SCREWS "A".



# 1974 CORVETTE

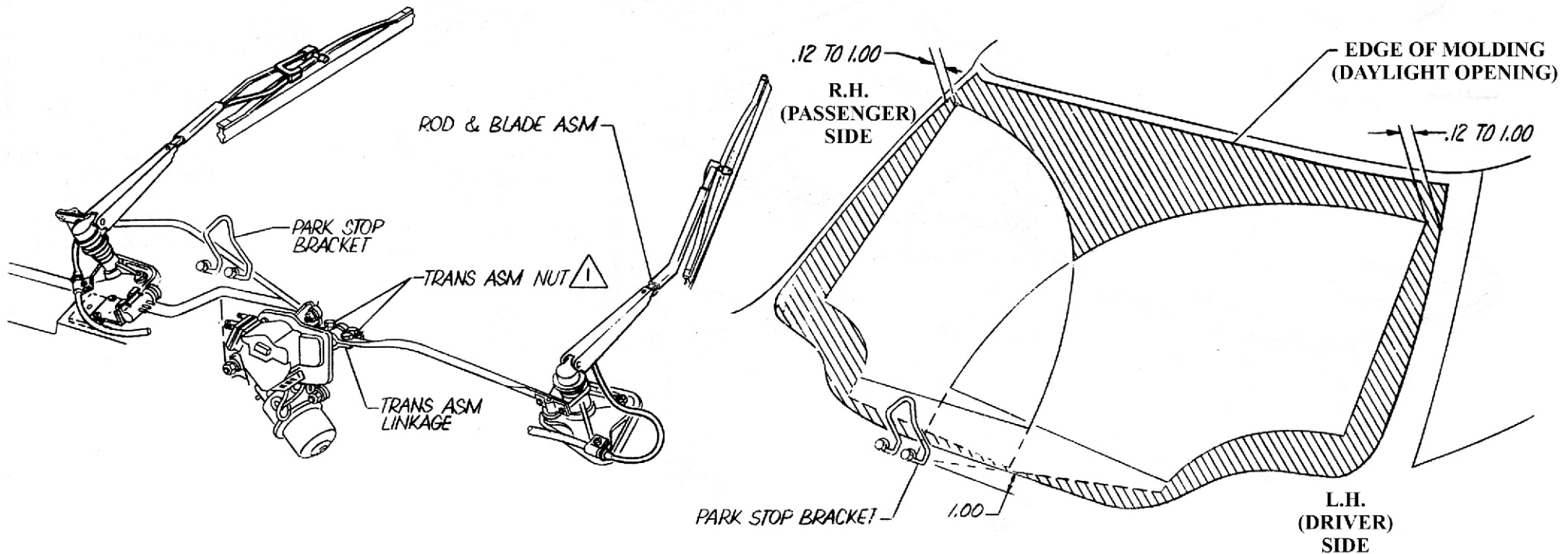
## WINDSHIELD WIPER SETTING PROCEDURE

1. INSTALL ROD & BLADE ASM TO TRANSMISSION. **NOTE** Key on trans locates rod & blade asm in positive location.
2. INSTALL LINKAGE TO MOTOR CRANK WITH BALL IN CENTER OF SLOT. FINGER TIGHTEN NUTS-PART OF TRANS. ASM.
3. POSITION TIP OF L.H. BLADE 1.00 BELOW THE PARK STOP BRACKET.
4. POSITION TIP OF R.H. BLADE ABOVE AND TOUCHING L.H. BLADE.
5. TORQUE NUTS - STEP 2.
6. POSITION BLADES ON UPPER SURFACE OF PARK STOP BRACKET.
7. CYCLE SYSTEM ON WET WINDSHIELD HI SPEED AND ADJUST TIPS OF BLADES TO BE .12 TO 1.00 FROM EDGE OF MOLDING AS SHOWN USING NUT'S TRANSMISSION ASM FOR ADJUSTMENT.



# 1975-78 CORVETTE WINDSHIELD WIPER SETTING PROCEDURE

1. INSTALL ROD & BLADE ASM TO TRANSMISSION. **NOTE** Key on trans locates rod & blade asm in positive location.
2. INSTALL LINKAGE TO MOTOR CRANK WITH BALL IN CENTER OF SLOT. FINGER TIGHTEN NUTS-PART OF TRANS. ASM.
3. POSITION TIP OF L.H. BLADE 1.00 BELOW THE PARK STOP BRACKET.
4. POSITION TIP OF R.H. BLADE ABOVE AND TOUCHING L.H. BLADE.
5. TORQUE NUTS - STEP 2.
6. POSITION BLADES ON UPPER SURFACE OF PARK STOP BRACKET.
7. CYCLE SYSTEM ON WET WINDSHIELD HI SPEED AND ADJUST TIPS OF BLADES TO BE .12 TO 1.00 FROM EDGE OF MOLDING AS SHOWN USING NUT'S TRANSMISSION ASM FOR ADJUSTMENT.



# 1979-82 CORVETTE

## WINDSHIELD WIPER SETTING PROCEDURE

1. INSTALL ROD & BLADE ASM TO TRANSMISSION. **[NOTE]** Key on trans locates rod & blade asm in positive location.
2. INSTALL LINKAGE TO MOTOR CRANK WITH BALL IN CENTER OF SLOT. FINGER TIGHTEN NUTS- PART OF TRANS. ASM.
3. POSITION TIP OF L.H. BLADE 1.00 BELOW THE PARK STOP BRACKET.
4. POSITION TIP OF R.H. BLADE ABOVE AND TOUCHING L.H. BLADE.
5. TORQUE NUTS - STEP 2.
6. POSITION BLADES ON UPPER SURFACE OF PARK STOP BRACKET.
7. CYCLE SYSTEM ON WET WINDSHIELD HI SPEED AND ADJUST TIPS OF BLADES TO BE .12 TO 1.00 FROM EDGE OF MOLDING AS SHOWN USING NUTS TRANSMISSION ASM FOR ADJUSTMENT. SEE VIEW A.

ITEM REFERENCE  
  PROCESS MATERIAL  
  TORQUE  
  EXISTING AS PART OF

